

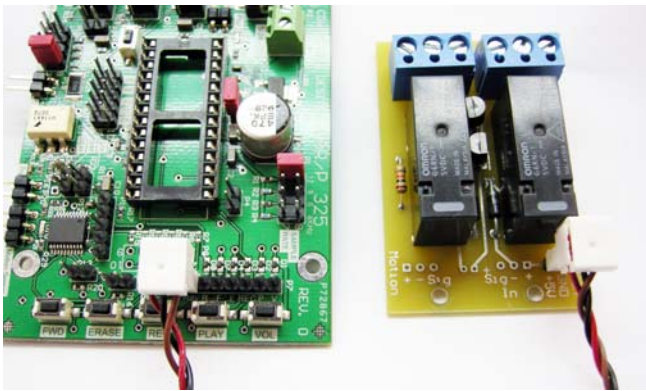
Dual Relay Board Manual

DRB-2 Model

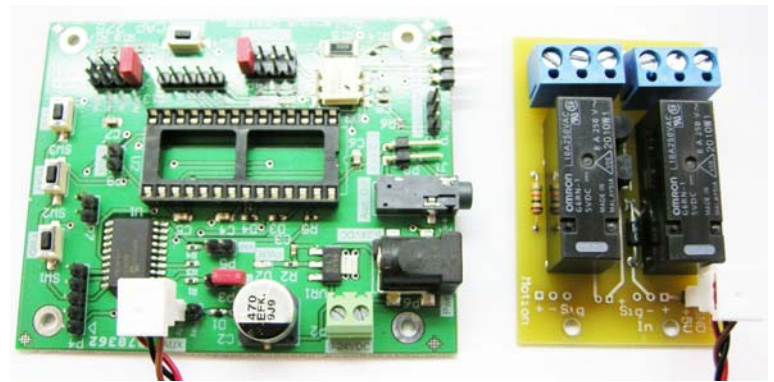
The dual relay board provides two single pole double throw relays that activate whenever sound is playing on the CAR/P-325 or CAP-275. Each relay has a common connection, a normally closed connection (this is connected to common when the relay is not active), and a normally open connection (this is connected to the common when the relay is active). Allowing you to turn on/off two devices in conjunction with the audio playing back.

Connect cables as shown in the pictures below.

CAR/P-325



CAP-275



On the CAR/P-325 the cable connects to the Quick Connect header (P7) on the pins labeled +, -, and Rdy. The “+” pin connects to the red wire, the “-” pin connects to the black wire, and the “Rdy” pin connects to the brown wire.

On the CAP-275 the cable connects to the Aux header (P1) on the pins labeled +, -, and Rdy. The “+” pin connects to the red wire, the “-” pin connects to the black wire, and the “Rdy” pin connects to the brown wire.

General Operating Instructions:

- ⇒ Connect the cables as described above.
- ⇒ Connect the devices that you want to turn on and off to the blue terminal blocks on the Dual Relay Board. Each relay has a common, normally closed, and normally open connection.
- ⇒ Power up your CAR/P or CAP board and press play. You should see/hear your devices turning on/off when the sound plays back.